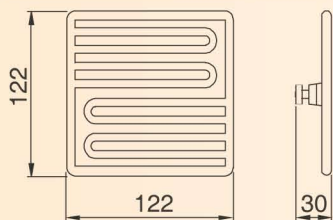


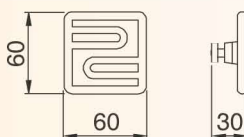
FLAT SQUARE OSPG MODELS 122x122 mm

| Code    | Watts | Weight Kg |
|---------|-------|-----------|
| OSPG250 | 250   | 0,24      |
| OSPG400 | 400   | 0,24      |
| OSPG650 | 650   | 0,24      |



FLAT SQUARE OSPP MODELS 60x60 mm

| Code    | Watts | Weight kg |
|---------|-------|-----------|
| OSPP125 | 125   | 0,10      |
| OSPP200 | 250   | 0,10      |



HOLLOW CERAMIC ELEMENTS

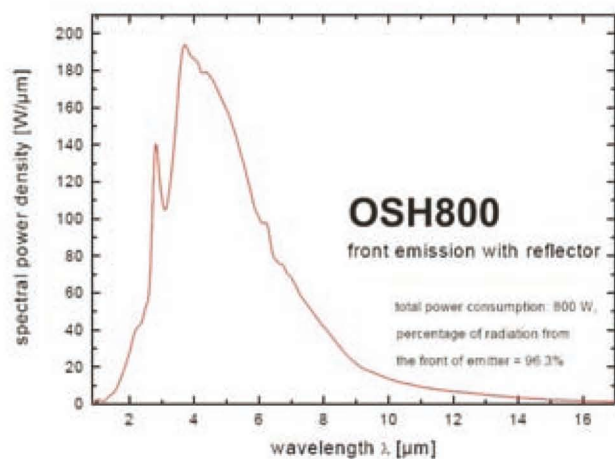
The Hollow offers the following advantages over conventional ceramic emitters:

- Heat up time reduced by over 40%
- Energy savings of over 15% in some applications
- Lightweight construction with low thermal mass.

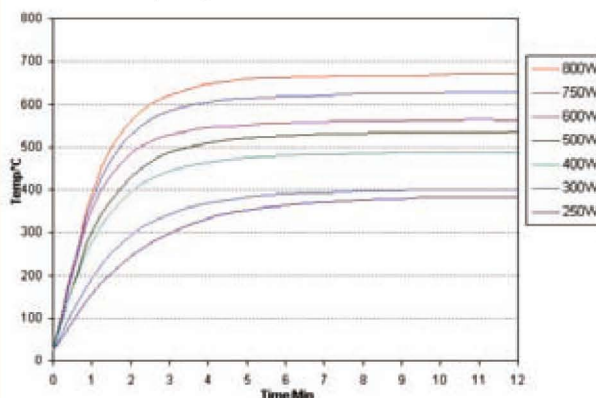
The Hollow element is available in a range of Power ratings and voltages

The universal ceramic mounting allows it to be easily interchanged with a conventional emitter in an existing installation

Infrared Spectrum for OSH800 model



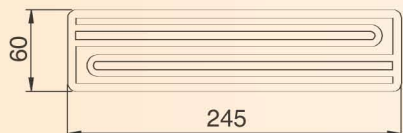
Heat Up Graph for OSH / OSHP / OSHC models



- Based on OSH test of average surface temperature with an infrared thermometer set at an emissivity of 0.9 (with the element mounted in an aluminised steel reflector OSCN)
- These temperatures also apply to the OSHC
- For OSHP divide the wattage by 2

FLAT RECTANGULAR OSH MODELS 245x60 mm

| Code   | Watts | Weight Kg |
|--------|-------|-----------|
| OSH250 | 250   | 0,28      |
| OSH300 | 300   | 0,28      |
| OSH400 | 400   | 0,28      |
| OSH500 | 500   | 0,28      |
| OSH600 | 600   | 0,28      |
| OSH750 | 750   | 0,28      |
| OSH800 | 800   | 0,28      |



FLAT RECTANGULAR OSHP MODELS 122x60 mm

| Code    | Watts | Weight kg |
|---------|-------|-----------|
| OSHP125 | 125   | 0,16      |
| OSHP200 | 200   | 0,16      |
| OSHP250 | 250   | 0,16      |
| OSHP300 | 300   | 0,16      |
| OSHP400 | 400   | 0,16      |



FLAT SQUARE OSHC MODELS 122x122 mm

| Code    | Watts | Weight Kg |
|---------|-------|-----------|
| OSHC250 | 250   | 0,27      |
| OSHC300 | 300   | 0,27      |
| OSHC400 | 400   | 0,27      |
| OSHC500 | 500   | 0,27      |
| OSHC600 | 600   | 0,27      |
| OSHC800 | 800   | 0,27      |

