

GROUP 6 - Infrared radiation equipment

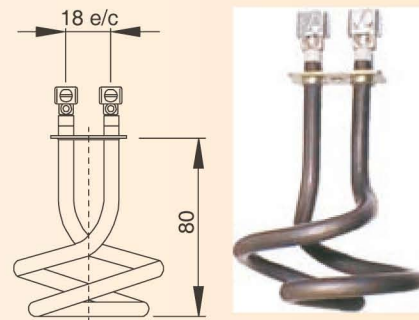
6.9 - Heating elements for infrared reflectors on stock farms

IGRR

General characteristics

- Tubular elements in stainless steel tube AISI 321 or 304L of Ø8 mm, insulated with electromelted and lamination-compressed magnesium oxide.
- Terminals BM4-P (Thread M4)
- Zinc-plated steel flange.
- Standard voltage ~230 V

Code	Volts	Watts	Santi Escoin's constructive thermic class
IGRR030	~230	300	T-700-T
IGRR045	~230	400	T-700-T



GROUP 7 - Industrial heating units

7.1 - Heating elements for warm air guns

RCAPAC

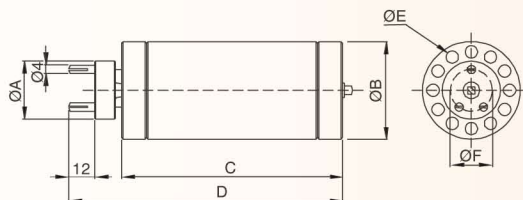
Ceramic heater without metallic cover. The resistive wire is situated in several holes and protected at the ends to avoid moving. Connections are located in the plugged head.

General characteristics

- Heating elements with exposed coil of Nickel-Chrome alloy.
- Density load: 22 W/cm²
- Maximum superficial temperature: 650 °C
- Connections: plug-in ceramic header
- Standard voltage: ~220 V

Usual applications

- Warm air guns.
- Industrial dryers.
- Electric ovens.
- Heating of gas medium.
- Welding and shrink plastic ovens



Code	Description	Watts	Dimensions in mm						Weight in Kg
			ØA	ØB	C	D	ØE	ØF	
550201001	RCAPAC-001	280/350	28	26	105	130	4	19	0,10
550202001	RCAPAC-002	350/400	28	26	105	130	4	19	0,10
550203001	RCAPAC-003	500/500	28	26	105	130	4	19	0,10
550205001	RCAPAC-005	2200/2800	30	47	175	205	7	20	0,38

GROUP 7 - Industrial heating units

7.2 - Electric industrial nightstorage heaters

ACN

The ACN night heat accumulators range is designed to implement a totally independent heating system, meeting the most demanding heating needs in a most rational and economic way.

The ACN accumulators are easy to install, without the need for brickwork, tubes, chimneys or central appliance room.

You can benefit from a totally silent heating system (no fan), automatic and with no maintenance.

We can also comment on the great benefits of using electric night rate:

Night rate meter use:

- The night rate used for heat storing has up to a 55% discount on the day rate.

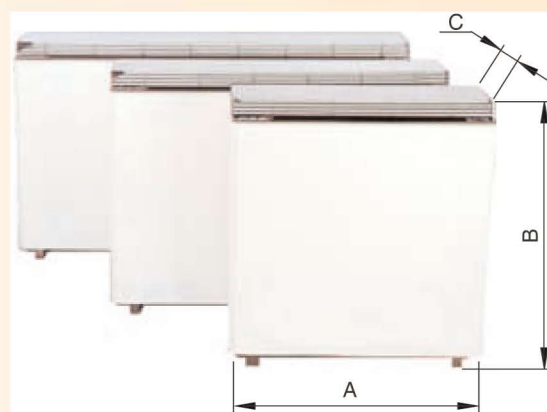
NO night rate meter use:

- By using the heat storing system you can maintain your room all day at the desired temperature, without the need for requesting additional power.

How it works: After turning on at the start of the night rate, the accumulator starts consuming the necessary power to restore the heat used the day before. At the end of the night rate, and after automatically turning off, the stored heat is used to maintain the proper temperature for the rest of the day.

Technical data

Code	ACN1,5	ACN2,25	ACN3
Nominal load	1,5 kW	2,25 kW	3 kW
Storage 8 h.	11,2 kW	16,8 kW	22,4 kW
Maximum output	770 W	1100 W	1410 W
Minimum output	245 W	330 W	495 W
Average life	15,5 h	15,4 h	15,5 h
Total weight	70 Kg	100 Kg	130 Kg
Weight without bricks	14 Kg	19 Kg	24 Kg
Number of bricks	8	12	16
Finishes	Beige front panel. Black grid aluminium top.		



Code	Volts	Watts	Dimensions in mm			Weight kg
			A	B	C	
ACN1,5	~230	1500	522	570	159	70
ACN2,25	~230	2250	752	570	159	100
ACN3	~230	3000	982	570	159	130